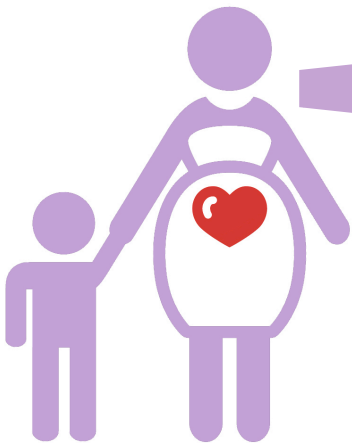


Choosing a Puget Sound Hospital At-a-Glance



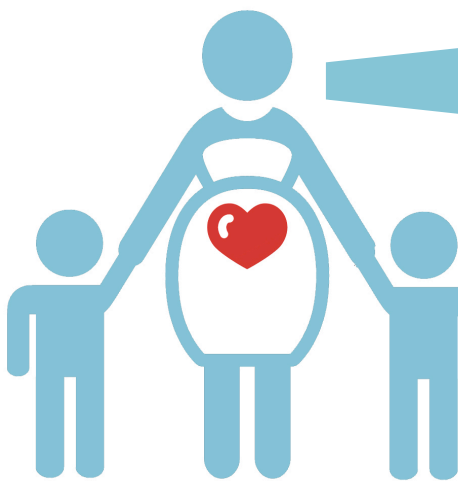
I'm a first-time mom hoping to avoid a cesarean!
Which hospital has the lowest rates for women like me?

Tacoma Area: St. Francis Hospital
Seattle Area: Group Health Hospital
Snohomish County: Providence Medical Center



I'm hoping for a vaginal birth after cesarean!
Which hospital has the highest rates for women like me?

Tacoma Area: Auburn Medical Center
Seattle Area: Group Health Hospital
Snohomish County: no recommendation



I've had a baby before and want to avoid a cesarean!
Which hospital has the lowest rates for women like me?

Tacoma Area: St. Francis Hospital
Seattle Area: Group Health Hospital
Snohomish County: Providence Medical Center

View full statistics for all Puget Sound hospitals on the next page!
This information brought to you by www.SereneDouglas.com

2012 Puget Sound Hospital Cesarean Report

- **Overall CS Rate:** This is the cesarean rate for all women giving birth in that hospital.
- **NTSV CS Rate:** This is the cesarean rate for women giving birth for the first time, who are at least 37 weeks pregnant, with one baby in a head-down position. The cesarean rate of this population is most likely to be influenced by hospital or care provider practices and policies. The state health authority has set an initial goal that all hospitals regardless of their level of care should have an NTSV cesarean rate of no more than 20%.
- **TSVBA1C CS Rate:** This is the cesarean rate for women giving birth after one previous cesarean who are at least 37 weeks pregnant, with one baby in a head-down position. These women are considered appropriate candidates for a planned vaginal birth. This rate gives you an idea of how likely a hospital is to recommend VBAC for women who are good candidates. The state health authority has set an initial goal that all hospitals regardless of their level of care should have a TSVBA1C cesarean rate of no more than 80%. Please note, the VBAC success rate among all women who attempt a vaginal birth regardless of risk category 75% or better.

Hospital Name	City	2011 Overall CS Rate	NTSV CS Rate		TSVBA1C CS Rate	
			FY 2012	3 Year Avg	FY 2012	3 Year Avg
Auburn Regional Medical Center	Auburn	32.95%	32.5%	35.9%	67.6%	75.1%
Cascade Valley Hospital*	Arlington	34.32%	36.3%	35%	95.2%	98.6%
Columbia Capital Medical Center	Olympia	33.69%	30.9%	19%	76.8%	64.6%
Evergreen Hospital	Kirkland	38.52%	35.9%	35.8%	83.9%	87.6%
Good Samaritan Hospital*	Puyallup	28.16%	22.7%	22.4%	94.6%	96.5%
Group Health Central Hospital	Seattle	24.02%	21.9%	23.7%	55%	53.9%
Harrison Memorial Hospital	Bremerton	27%	26.1%	26.7%	81.6%	88.6%
Highline Community Hospital	Burien	27.49%	27.8%	27.9%	90.6%	93.3%
Island Hospital	Anacortes	30.96%	27.1%	27.5%	94.3%	88.7%
Northwest Hospital	Seattle	31.58%	28.4%	27.8%	74.8%	77.6%
Overlake Hospital	Bellevue	39.71%	35.8%	34.4%	92.1%	91.8%
Peacehealth St Joseph Hospital	Bellingham	32.27%	29.2%	29.3%	79.5%	79.6%
Providence Medical Center	Everett	27.27%	21.7%	24.7%	83.6%	84.5%
Providence St. Peter Hospital*	Olympia	28.01%	20.9%	18.7%	93.1%	93.6%
Skagit Valley Hospital	Mt. Vernon	31.77%	26.6%	24.9%	81.7%	83.3%
St. Elizabeth Hospital	Enumclaw	30.69%	26.9%	23.2%	75.8%	72.7%
St. Francis Community Hospital*	Federal Way	24.16%	19.1%	23.2%	90.7%	94.7%
St. Joseph Hospital	Tacoma	27.14%	24.3%	25.7%	76.2%	88.9%
Swedish Edmonds Hospital	Edmonds	30.09%	27.6%	28.5%	80%	80.4%
Swedish Hospital First Hill	Seattle	32.63%	27.3%	28%	72%	73.6%
Swedish Medical Center Ballard*	Seattle		27.3%	29.7%	100%	100%
Swedish Medical Center Issaquah	Issaquah	34.78%	25.7%	25.7%	77.8%	77.8%
Tacoma General Hospital	Tacoma	33.32%	26.6%	25.4%	75.5%	74.6%
UW Medical Center	Seattle	34.6%	29.7%	29.8%	64.2%	66.4%
Valley Medical Center	Renton	33.83%	30.1%	31.4%	77.9%	76%
Whidbey General Hospital*	Coupeville	33.16%	31.7%	27.9%	92.3%	97.4%

Sources: Washington State Health Care Authority Hospital Obstetric Report State Fiscal Year 2012 (Jan-June). Washington State Department of Health CHARS Community Hospital Discharge Data for 2011. An asterisk indicates this hospital does not allow planned vaginal birth after cesarean.